



556 Commerce Street, Franklin Lakes, NJ 07417 Tel: (201) 405-0311

Material Handling in the Pharmaceutical Environment



**SPECIFICATION SHEET**  
**METOLIFT® BV-02 Butterfly Valves**  
**Pg. 1 of 2**

**Contact Information**

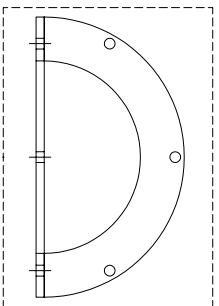
Company:		Contact Name:	
Street Address (1)		Title:	
Street Address (2)		Contact Phone:	
City		Contact Fax:	
State/Province		Contact Email:	
ZIP / Postal Code		Mobile Phone:	
Country			

**Valve Requirements**

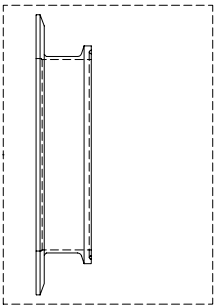
(please refer to the sample drawings when completing this section)

Valve Size	<input type="checkbox"/> 4" <input type="checkbox"/> 6" <input type="checkbox"/> 8" <input type="checkbox"/> 10" <input type="checkbox"/> 12" <input type="checkbox"/> other (specify) _____	Valve Actuation	<input type="checkbox"/> manual <input type="checkbox"/> powered
Inlet	<input type="checkbox"/> Bolt Circle, standard <input type="checkbox"/> Bolt Circle, custom (specify) _____ holes, _____ dia, _____ BC <input type="checkbox"/> Straight Neck <input type="checkbox"/> QD <input type="checkbox"/> Welded to body <input type="checkbox"/> Sanitary Ferrule <input type="checkbox"/> QD <input type="checkbox"/> Welded to body <input type="checkbox"/> Other (specify) _____	Powered Actuation Options:	<input type="checkbox"/> open/close only (standard) <input type="checkbox"/> intermediate positioning (manually located) <input type="checkbox"/> Intermediate positioning (PLC or machine controlled – includes position feedback system) <input type="checkbox"/> Include end of travel (opened/closed) position switches
Outlet:	<input type="checkbox"/> No outlet neck <input type="checkbox"/> Straight neck <input type="checkbox"/> Sanitary Ferrule	Valve Material	316L S.S. standard for product contact parts, 304 S.S. for non-contact parts.
		Surface finish, product contact parts	<input type="checkbox"/> #4 Pharma (~35 $\mu$ in Ra) (standard) <input type="checkbox"/> #6 Pharma (~20 $\mu$ in Ra) <input type="checkbox"/> #7 Pharma (~10 $\mu$ in Ra) <input type="checkbox"/> #8 Pharma (~5 $\mu$ in Ra)

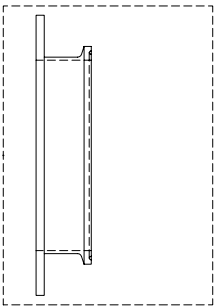




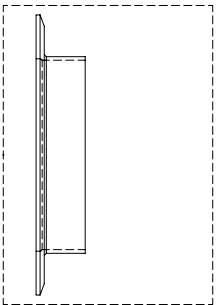
BOLT CIRCLE  
ON VALVE BODY



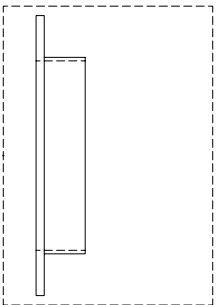
SANITARY FERRULE ADAPTER  
CLAMPED TO VALVE BODY



SANITARY FERRULE ADAPTER  
WELDED TO VALVE BODY

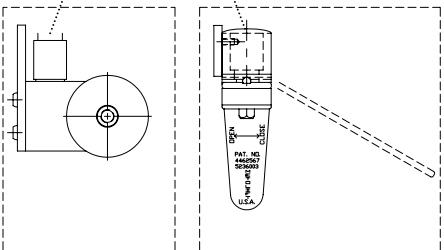


STRAIGHT NECK  
CLAMPED TO VALVE BODY



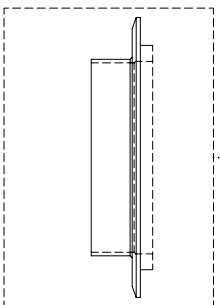
STRAIGHT NECK  
WELDED TO VALVE BODY

FLANGE SIDE  
(INLET)  
↑  
RETAINER SIDE  
(OUTLET)

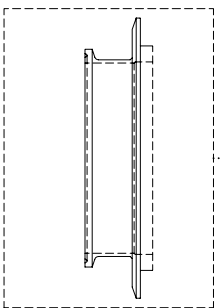


MANUAL  
ACTUATOR

PNEUMATIC  
ACTUATOR



STRAIGHT NECK  
CLAMP-ON RETAINER



SANITARY FERRULE  
CLAMP-ON RETAINER



FRANKLIN LAKES, NEW JERSEY, U.S.A. 07417

PROJECT

BUTTERFLY VALVE

DRAWN A.B.  
APPR. H.H.

CAPACITY

N/A

TITLE

MODEL BV-02  
SHOWN WITH TYPICAL OPTIONS

MATERIAL

316 S.S.

FINISH  
PHARMA.  
GRADE

DATE

8/8/08

SCALE

~

DRAWING NUMBER

BV-02.DWG

THIS DOCUMENT AND THE INFORMATION CONTAINED  
THEREIN IS THE EXCLUSIVE PROPERTY OF METO  
CORP., AND IS NOT TO BE REPRODUCED OR USED  
BY OTHERS WITHOUT WRITTEN CONSENT BY METO  
CORP. AND IS NOT TO BE USED IN ANY WAY  
DETRIMENTAL TO METO CORP.

METO CORP. U.S.A.  
REV. -